

PEA-M

R32 Large Capacity Ceiling Concealed Ducted System
Standard Inverter Heat Pump (Three Phase)

Mr.SLIM™

The **PEA-M** large capacity ducted system offers the ultimate in flexibility for larger scale heating and cooling applications. Our latest version works with even greater lengths of ductwork through a 200Pa fan setting making it ideal for warehouse, atria and large retail applications.

Key Features & Benefits:

- Ultimate ductwork flexibility through 5 static pressure settings up to 200Pa
- Value price point
- Generous coverage with up to 70m pipe run
- Utilises lower GWP R32 refrigerant

R32

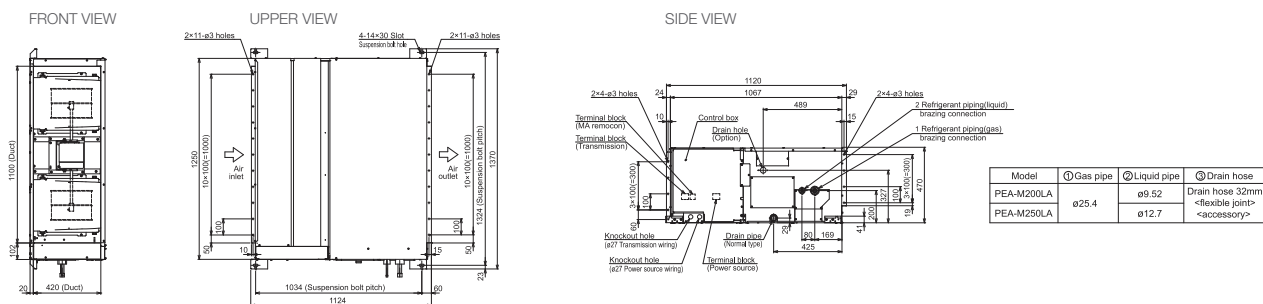




PEA-M INDOOR UNITS		PEA-M200LA	PEA-M250LA
CAPACITY (kW)	Heating (nominal)	22.4 (7.1-25.0)	27.0 (7.3-31.0)
	Cooling (nominal)	19.0 (9.2-22.4)	22.0 (9.9-27.0)
	Heating (UK)	16.8 (5.3-18.8)	20.3 (5.5-23.3)
	Cooling (UK)	16.5 (8.0-19.5)	19.1 (8.6-23.5)
	SHF (nominal)	0.80	0.79
COP / EER (nominal)	3.40 / 3.12	3.30 / 3.00	
SCOP (ηsh) / SEER (ηsc) (BS EN14825)	3.60 (141.1%) / 5.47 (215.9%)	3.55 (139.1%) / 5.38 (212.3%)	
AIRFLOW (l/s) (150Pa)	Lo-Mi-Hi	700-850-1000	750-917-1083
PIPE SIZE mm (in)	Gas	28.58 (1 1/8")	28.58 (1 1/8")
	Liquid	9.52 (3/8")	12.7 (1/2")
EXTERNAL STATIC PRESSURE (Pa)		60 / 75 / 100 / 150 / 200	60 / 75 / 100 / 150 / 200
SOUND PRESSURE LEVEL (dBA) (60Pa)	Lo-Mi-Hi	35 - 40 - 43	38 - 43 - 47
SOUND POWER LEVEL (dBA) (60Pa)	Lo-Mi-Hi	63 - 64 - 64	67 - 67 - 68
DIMENSIONS (mm)	Width x Depth x Height	1370 x 1120 x 470	1370 x 1120 x 470
WEIGHT (kg)		87	87
ELECTRICAL SUPPLY		220-240V, 50Hz	220-240V, 50Hz
PHASE		Single	Single
POWER INPUT (kW)		0.35	0.53
RUNNING CURRENT (A) [MAX]		3.1	3.4
FUSE RATING (BS88) - HRC (A)		6	6
MAINS CABLE No. Cores		3	3
INTERCONNECTING CABLE	No. Cores	3	3
WIRED REMOTE CONTROLLER REFERENCE		PAR-40MAA	PAR-40MAA

PUZ-M OUTDOOR UNITS		PUZ-M200YKA	PUZ-M250YKA
SOUND PRESSURE LEVEL (dBA)	Heating/Cooling	60 / 58	62 / 59
WEIGHT (kg)		129	138
DIMENSIONS (mm)	Width x Depth x Height	1050 x 330+40 x 1338	1050 x 330+40 x 1338
PIPE SIZE mm (in)	Gas	28.58 (1 1/8")	28.58 (1 1/8")
	Liquid	9.52 (3/8")	12.7 (1/2")
ELECTRICAL SUPPLY		380-415v, 50Hz	380-415v, 50Hz
PHASE		Three	Three
SYSTEM POWER INPUT (kW)	Heating/Cooling (nominal)	6.59 / 6.09	8.18 / 7.33
	Heating/Cooling (UK)	5.34 / 5.18	6.63 / 6.23
STARTING CURRENT (A)		5	5
SYSTEM RUNNING CURRENT (A)	Heating/Cooling [MAX]	10.08 / 9.62 [22.5]	12.18 / 11.22 [22.5]
FUSE RATING (BS88) - HRC (A)		25	25
MAINS CABLE No. CORES		5	5
MAX PIPE LENGTH (m)		70	70
MAX HEIGHT DIFFERENCE (m)		30	30
CHARGE REFRIGERANT (kg) / CO ₂ EQUIVALENT (t)	R32 (GWP 675) - 30m	5.6 / 3.78	6.8 / 4.59
MAX ADDITIONAL REFRIGERANT (kg) / CO ₂ EQUIVALENT (t)	R32 (GWP 675)	1.6 / 1.08	2.4 / 1.62

PEA-M DIMENSIONS



Telephone: 01707 282880
 email: air.conditioning@meuk.mee.com
les.mitsubishielectric.co.uk



@meuk_les
@green_gateway

Mitsubishi Electric Living
Environmental Systems UK

Mitsubishi Electric
Cooling and Heating UK

mitsubishielectricuk_les

Mitsubishi Electric Living
Environmental Systems UK
BLOG thehub.mitsubishielectric.co.uk

UNITED KINGDOM Mitsubishi Electric Europe Living Environment Systems Division, Travellers Lane, Hatfield, Hertfordshire, AL10 8XB, England. Telephone: 01707 282880 Fax: 01707 278881
 IRELAND Mitsubishi Electric Europe, Westgate Business Park, Ballymount, Dublin 24, Ireland. Telephone: (01) 419 8800 Fax: (01) 419 8890 International code: (003531)

Country of origin: United Kingdom - Japan - Thailand - Malaysia. ©Mitsubishi Electric Europe 2021. Mitsubishi and Mitsubishi Electric are trademarks of Mitsubishi Electric Europe B.V. The company reserves the right to make any variation in technical specification to the equipment described, or to withdraw or replace products without prior notification or public announcement. Mitsubishi Electric is constantly developing and improving its products. All descriptions, illustrations, drawings and specifications in this publication present only general particulars and shall not form part of any contract. All goods are supplied subject to the Company's General Conditions of Sale, a copy of which is available on request. Third-party product and brand names may be trademarks or registered trademarks of their respective owners.

Note: The fuse rating is for guidance only. Please refer to the relevant databook for detailed specification. It is the responsibility of a qualified electrician/electrical engineer to select the correct cable size and fuse rating based on current regulation and site specific conditions. Mitsubishi Electric's air conditioning equipment and heat pump systems contain a fluorinated greenhouse gas, R410A (GWP:2088), R32 (GWP:675), R407C (GWP:1774), R134a (GWP:1430), R513A (GWP:631), R454B (GWP:466), R1234ze (GWP:7) or R1234yf (GWP:4). *These GWP values are based on Regulation (EU) No 517/2014 from IPCC 4th edition. In case of Regulation (EU) No.626/2011 from IPCC 3rd edition, these are as follows. R410A (GWP:1975), R32 (GWP:550), R407C (GWP:1650) or R134a (GWP:1300).

Effective as of March 2021

