

INDOOR UNIT

Floor standing exposed

PFFY-P VKM-E2



For living rooms, bed rooms, or offices where a sophisticated design is required. The latest Mitsubishi innovation – floor-standing air-conditioner sophisticated in design, rich in function.

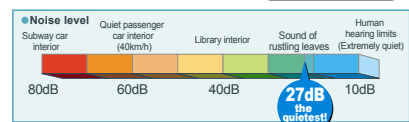


Quiet operation

Mitsubishi Electric air conditioners have always been some of the quietest models available in the market. Our new floor-standing models are no exception. It can create a silent and comfortable space where the occupants would not even recognize the existence of air conditioner operation.

ONLY
27dB

*2.5kw class



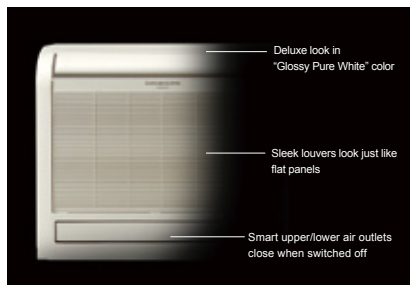
Sophisticated Design

From Mitsubishi Electric, an innovative new floor-standing air-conditioner. Our pleasing mix of streamlined form and diversified function.

Engineered to keep room walls free, furnish comfy cooling in summer, toasty heating in winter.

The "Glossy Pure White" colour ensures a deluxe look, the perfect match for any room. Both upper and lower air outlets remain closed when switched OFF, in a smart and striking image.

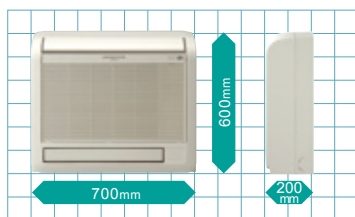
A superb new air-conditioner from Mitsubishi, providing a handsome fit for your own distinctive interior.



Slim but Mighty

The unit body is slim and trim, the essence in compact. An ideal size for living rooms, bedrooms, and more. The removable and washable front panel makes cleaning a snap.

Easy and regular cleaning allows your air-conditioner stay beautiful while keeping its energy-efficient operation always possible.

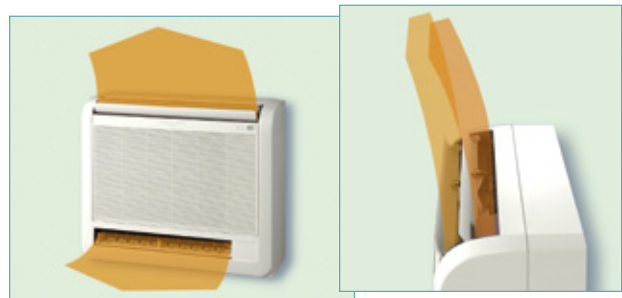


Optimum Air Distribution

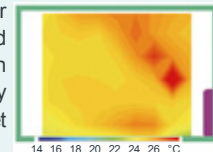
Comfy room temperatures are realized by the optimum, powerful and efficient air distribution through upper and lower air outlets.

The upper vane angle is remote controllably, with 5 air flow direction levels (+Swing and Auto modes) and 4 wind power levels (+Auto mode).

By setting the vane angle almost vertical, annoying direct wind can be avoided for your better comfort.



The air from both upper and lower air outlets is optimally controlled and distributed evenly to every corner of the room. In heating mode, the warm air is smartly controlled to stay at the floor level: Your feet do not feel chilled any more!



► Specifications

		PFFY-P20VKM-E2	PFFY-P25VKM-E2	PFFY-P32VKM-E2	PFFY-P40VKM-E2	
Power source		1-phase 220-240V 50Hz				
Cooling capacity	*1 kW	2.2	2.8	3.6	4.5	
	*1 BTU/h	7,500	9,600	12,300	15,400	
Cooling capacity	*4 kW	2.2	2.8	3.7	4.6	
	*4 BTU/h	8,500	10,900	13,600	17,100	
Heating capacity	*1 kW	2.5	3.2	4.0	5.0	
	*1 BTU/h	8,500	10,900	13,600	17,100	
Power consumption	Cooling kW	0.025	0.025	0.025	0.028	
	Heating kW	0.025	0.025	0.025	0.028	
Current	Cooling A	0.20	0.20	0.20	0.24	
	Heating A	0.20	0.20	0.20	0.24	
External finish		Plastic (Pure white)				
Dimension		600 x 700 x 200				
H x W x D		23-5/8 x 27-9/16 x 7-7/8				
Net weight		15 (34)				
Heat exchanger		Cross fin (Aluminium plate fin and copper tube)				
Fan	Type x Quantity	Line flow fan x 2				
	Airflow rate *2 (Lo-Mid-Hi-SHi)	m ³ /min	5.9-6.8-7.6-8.7	6.1-7.0-8.0-9.1	6.1-7.0-8.0-9.1	8.0-9.0-9.5-10.7
	External static pressure	Pa	0			
Motor	Type	DC motor				
	Output	kW				
Air filter		PP honeycomb fabric (Catechin Filter)				
Refrigerant pipe diameter	Gas(Flare)	mm(in.)	ø12.7 (ø1/2)			
	Liquid(Flare)	mm(in.)	ø6.35 (ø1/4)			
Field drain pipe diameter		I.D.16 (5/8)				
Sound pressure level (Lo-Mid-Hi-SHi)	*2 dB(A)	27-31-34-37	28-32-35-38	28-32-35-38	35-38-42-44	

Notes:

- *1 Cooling/heating capacity indicates the maximum value at operation under the following condition.
Cooling Indoor : 27°C(81°F)DB/19°C(66°F)WB, Outdoor : 35°C(95°F)DB
Heating Indoor : 20°C(68°F)DB, Outdoor : 7°C(45°F)DB/6°C(43°F)WB
- *2 Airflow rate/Sound pressure level are in (low-middle-high-shigh).
- *3 It is measured in anechoic room.
- *4 Reference data under condition of Indoor 27°C(81°F)DB/19.5°C(67°F)WB, Outdoor 35°C(95°F)DB

