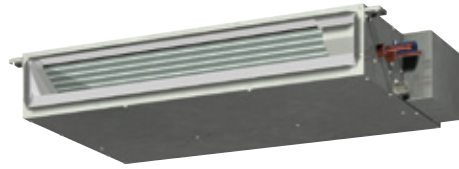


# INDOOR UNIT

## Ceiling concealed type



### PEFY-P VMS1(L)-E

Static Pressure <b>5~50Pa</b>	Height <b>200mm</b> <small>7-28/32in.</small>	Low Noise	Width <b>790mm</b> <small>31-1/8in.</small>	Width <b>990mm</b> <small>39in.</small>	Width <b>1,190mm</b> <small>46-7/8in.</small>
----------------------------------	---	-----------	---	---	---

The ultra thin unit of 200mm offers increased flexibility, and is particularly suitable for places where low noise operation is desired from a slim line body.



#### Changeable static pressure

The unit is made suitable for a variety of applications with its four static pressure settings of 5, 15, 35, 50Pa.

#### Changeable airflow rate

Low, middle, and high fan speed settings deliver precise comfort.

#### Choice for drain pump

Drain pump is an optional part for the VMS1L, and a standard for VMS1.

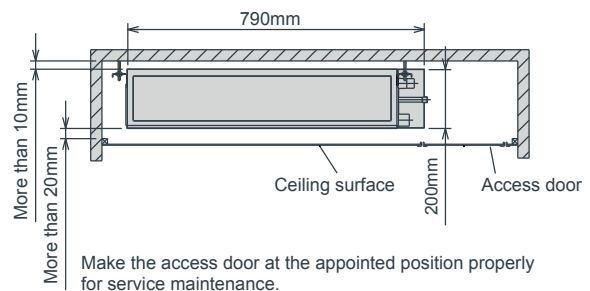
\*For places where low noise operation is especially required (i.e. Hotels), VMS1L (without drain pump) is recommended.

#### PP Honeycomb fabric

Washable PP Honeycomb fabric filter as standard

**Ultra low height unit with 200mm (7-28/32in.) high  
Ultra-narrow width of 790mm (P15-P32 models)  
[990mm for P40,50 models / 1190mm for P63 models]**

Can be installed easily in tight spaces, such as ceiling cavities or drop-ceilings.



#### Reduced noise thanks to the use of newly designed centrifugal fan and coil

Sound pressure level table (Standard static pressure) at 15Pa

		dB(A)							
Sound pressure Level	Capacity	P15	P20	P25	P32	P40	P50	P63	
	Fan Speed	High	28	29	30	32	33	35	36
Mid		24	25	26	27	30	32	33	
Low		22	23	24	24	28	30	30	

## ► Specifications

		PEFY-P15VMS1(L)-E	PEFY-P20VMS1(L)-E	PEFY-P25VMS1(L)-E	PEFY-P32VMS1(L)-E	PEFY-P40VMS1(L)-E	PEFY-P50VMS1(L)-E	PEFY-P63VMS1(L)-E	
Power source		1-phase 220-240V 50Hz / 1-phase 220-240V 60Hz							
Cooling capacity	*1 kW	1.7	2.2	2.8	3.6	4.5	5.6	7.1	
	*1 BTU/h	5,800	7,500	9,600	12,300	15,400	19,100	24,200	
Cooling capacity	*4 kW	1.7	2.2	2.8	3.7	4.6	5.7	7.2	
	*4 BTU/h	5,800	7,500	9,600	12,300	15,400	19,100	24,200	
Heating capacity	*1 kW	1.9	2.5	3.2	4.0	5.0	6.3	8.0	
	*1 BTU/h	6,500	8,500	10,900	13,600	17,100	21,500	27,300	
Power consumption	*3 Cooling kW	0.05 [0.03]	0.05 [0.03]	0.06 [0.04]	0.07 [0.05]	0.07 [0.05]	0.09 [0.07]	0.09 [0.07]	
	*3 Heating kW	0.03 [0.03]	0.03 [0.03]	0.04 [0.04]	0.05 [0.05]	0.05 [0.05]	0.07 [0.07]	0.07 [0.07]	
Current	*3 Cooling A	0.42 [0.31]	0.47 [0.36]	0.50 [0.39]	0.50 [0.39]	0.56 [0.45]	0.67 [0.56]	0.72 [0.61]	
	*3 Heating A	0.31 [0.31]	0.36 [0.36]	0.39 [0.39]	0.39 [0.39]	0.45 [0.45]	0.56 [0.56]	0.61 [0.61]	
External finish		Galvanized							
Dimension		mm 200 x 790 x 700							
H x W x D		In. 7-7/8 x 31-1/8 x 27-9/16							
Net weight		kg(lbs.) 19(42) [18(40)] 20(45) [19(42)] 24(53) [23(51)] 28(62) [27(60)]							
Heat exchanger		Cross fin (Aluminium fin and copper tube)							
Fan	Type x Quantity	Sirocco fan x 2				Sirocco fan x 3		Sirocco fan x 4	
	Airflow rate (Lo-Mid-Hi)	m <sup>3</sup> /min	5-6-7	5.5-6.5-8	5.5-7-9	6-8-10	8-9.5-11	9.5-11-13	12-14-16.5
		L/s	83-100-117	91-108-133	91-117-150	100-133-167	133-158-183	158-183-217	200-233-275
	External static press	Pa	176-212-247	194-229-282	194-247-317	212-282-353	282-335-388	335-388-459	424-494-583
Motor		type DC motor							
output		kW 0.096							
Air filter		PP Honeycomb fabric (washable)							
Refrigerant pipe diameter	Gas	mm(in.) ø12.7 (ø1/2) Brazed ø15.88 (ø5/8) Brazed							
	Liquid	mm(in.) ø6.35 (ø1/4) Brazed ø9.52 (ø3/8) Brazed							
Field drain pipe diameter		mm(in.) O.D. 32 (1-1/4)							
Sound pressure level (Lo-Mid-Hi) (measured in anechoic room)	dB<A>	22-24-28	23-25-29	24-26-30	24-27-32	28-30-33	30-32-35	30-33-36	

### Notes:

- \*1 Cooling/Heating capacity indicates the maximum value at operation under the following condition.  
Cooling : Indoor : 27°C D.B./19°C W.B. (81°F D.B. / 66°F W.B.) Outdoor : 35°C D.B. (95°F D.B. )  
Heating : Indoor : 20°C D.B. (68°F D.B.) Outdoor : 7°C D.B. / 6°C W.B. (45°F D.B. / 43°F W.B.)  
Pipe length : 7.5m (24-9/16ft) Height difference : 0m (0ft)
- \*2 The external static pressure is set to 15 Pa at factory shipment.
- \*3 [ ] is in case of PEFY-P15-63VMS1L-E
- \*4 Reference data under condition of Indoor 27°C(81°F)DB/19.5°C(67°F)WB, Outdoor 35°C(95°F)DB

