

INDOOR UNIT

Ceiling concealed type

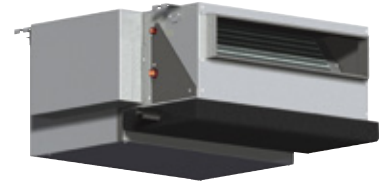
PEFY-P VMR-E-L/R

Static Pressure
5Pa

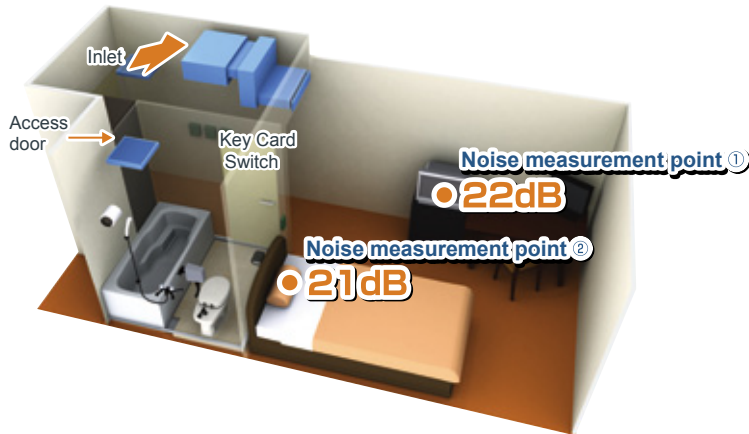
Width
640mm
25-6/32in.

Ultra
Low Noise

Piping connection
L model
R model



Problem solver for residential hotels, museums, libraries, or hospitals where low noise is especially a must!



Operable by key card switch

It is possible to operate / stop by taking a key card in and out.

Ultra low noise

Quiet indoor environment can be achieved with 21dB around the bed and 22dB around the desk.

*The noise level may differ by the room size or the setting of the unit.

Enables to install for symmetric design room

Left or right piping and control boxes are available depending on the layout of each room. Plus, as in the above figure, easy maintenance is possible from the access door in the bathroom.

*Seen from the front, the pipe and control box are on the right side for -R models.

Energy saving

Energy saving can be realized by preventing us from failing to switch off of the air conditioners with a centralized system when no one is in the room.

Note: Compact and simple controllers, designed specifically to control only start/stop, fan speed and temperature can be set in each room for the occupants' enhanced individual comfort.

Easy Maintenance

Drain pan and heat exchangers are washable from the access door in the bathroom, making maintenance easy and cost saving.

► Specifications

| | | | PEFY-P20VMR-E-L | PEFY-P25VMR-E-L | PEFY-P32VMR-E-L |
|---|-----------------------------|---------------------|---|-----------------|-----------------|
| Power source | | | 1-phase 220-230-240V 50Hz / 1-phase 220-230V 60Hz | | |
| Cooling capacity | *1 | kW | 2.2 | 2.8 | 3.6 |
| | *1 | BTU/h | 7,500 | 9,600 | 12,300 |
| Cooling capacity | *4 | kW | 2.2 | 2.8 | 3.7 |
| | *1 | kW | 2.5 | 3.2 | 4.0 |
| Heating capacity | *1 | BTU/h | 8,500 | 10,900 | 13,600 |
| | *1 | BTU/h | 8,500 | 10,900 | 13,600 |
| Power consumption | Cooling | kW | 0.06 / 0.06 | 0.06 / 0.06 | 0.07 / 0.08 |
| | Heating | kW | 0.06 / 0.06 | 0.06 / 0.06 | 0.07 / 0.08 |
| Current | Cooling | A | 0.29 / 0.29 | 0.29 / 0.29 | 0.34 / 0.38 |
| | Heating | A | 0.29 / 0.29 | 0.29 / 0.29 | 0.34 / 0.38 |
| External finish | | | Galvanized | | |
| Dimension H x W x D | Rear inlet | mm (in.) | 292 x 640 x 580 (11-1/2 x 25-1/4 x 22-7/8) | | |
| | Bottom inlet | mm (in.) | 300 x 640 x 570 (11-7/8 x 25-1/4 x 22-1/2) | | |
| Net weight | | | 18 (40) | | |
| Heat exchanger | | | Cross fin (Aluminum fin and copper tube) | | |
| Fan | Type x Quantity | | Sirocco fan x 1 | | |
| | Airflow rate (Lo-Mid-Hi) | m ³ /min | 4.8-5.8-7.9 | | 4.8-5.8-9.3 |
| | | L/s | 80-97-132 | | 80-97-155 |
| | | cfm | 170-205-279 | | 170-205-328 |
| External static pressure *2 | | Pa | 5 | | |
| Motor | Type | | 1-phase induction motor | | |
| | Output | kW | 0.018 | | 0.023 |
| Air filter | | | PP Honeycomb fabric (washable) | | |
| Refrigerant pipe diameter | Gas | mm(in.) | ø12.7 (ø1/2) Brazed | | |
| | Liquid | mm(in.) | ø6.35 (ø1/4) Brazed | | |
| Field drain pipe diameter | | | O.D. 26 (1) | | |
| Sound pressure level (Lo-Mid-Hi) *3 | 220V | dB(A) | 20-25-30 | | 20-25-33 |
| | 230V | | 21-26-32 | | 21-26-35 |
| | 240V | | 22-27-30 | | 22-27-33 |

| | | | PEFY-P20VMR-E-R | PEFY-P25VMR-E-R | PEFY-P32VMR-E-R |
|---|-----------------------------|---------------------|---|-----------------|-----------------|
| Power source | | | 1-phase 220-230-240V 50Hz / 1-phase 220-230V 60Hz | | |
| Cooling capacity | *1 | kW | 2.2 | 2.8 | 3.6 |
| | *1 | BTU/h | 7,500 | 9,600 | 12,300 |
| Cooling capacity | *4 | kW | 2.2 | 2.8 | 3.7 |
| | *1 | kW | 2.5 | 3.2 | 4.0 |
| Heating capacity | *1 | BTU/h | 8,500 | 10,900 | 13,600 |
| | *1 | BTU/h | 8,500 | 10,900 | 13,600 |
| Power consumption | Cooling | kW | 0.06 / 0.06 | 0.06 / 0.06 | 0.07 / 0.08 |
| | Heating | kW | 0.06 / 0.06 | 0.06 / 0.06 | 0.07 / 0.08 |
| Current | Cooling | A | 0.29 / 0.29 | 0.29 / 0.29 | 0.34 / 0.38 |
| | Heating | A | 0.29 / 0.29 | 0.29 / 0.29 | 0.34 / 0.38 |
| External finish | | | Galvanized | | |
| Dimension H x W x D | Rear inlet | mm (in.) | 292 x 640 x 580 (11-1/2 x 25-1/4 x 22-7/8) | | |
| | Bottom inlet | mm (in.) | 300 x 640 x 570 (11-7/8 x 25-1/4 x 22-1/2) | | |
| Net weight | | | 18 (40) | | |
| Heat exchanger | | | Cross fin (Aluminum fin and copper tube) | | |
| Fan | Type x Quantity | | Sirocco fan x 1 | | |
| | Airflow rate (Lo-Mid-Hi) | m ³ /min | 4.8-5.8-7.9 | | 4.8-5.8-9.3 |
| | | L/s | 80-97-132 | | 80-97-155 |
| | | cfm | 170-205-279 | | 170-205-328 |
| External static pressure *2 | | Pa | 5 | | |
| Motor | Type | | 1-phase induction motor | | |
| | Output | kW | 0.018 | | 0.023 |
| Air filter | | | PP Honeycomb fabric (washable) | | |
| Refrigerant pipe diameter | Gas | mm(in.) | ø12.7 (ø1/2) Brazed | | |
| | Liquid | mm(in.) | ø6.35 (ø1/4) Brazed | | |
| Field drain pipe diameter | | | O.D. 26(1) | | |
| Sound pressure level (Lo-Mid-Hi) *3 | 220V | dB(A) | 20-25-30 | | 20-25-33 |
| | 230V | | 21-26-32 | | 21-26-35 |
| | 240V | | 22-27-30 | | 22-27-33 |

Notes:

*1 Cooling/Heating capacity indicates the maximum value at operation under the following condition.

Cooling : Indoor 27°C(81°F)DB/19°C(66°F)WB, Outdoor 35°C(95°F)DB

Heating : Indoor 20°C(68°F)DB, Outdoor 7°C(45°F)DB/6°C(43°F)WB

*2 The external static pressure is set to 5Pa (at 220V, 230V, 240V).

*3 Measured in anechoic room. Sound pressure levels of the unit with a rear air inlet. (Sound pressure levels are higher than the unit with a bottom air inlet.)

*4 Reference data under condition of Indoor 27°C(81°F)DB/19.5°C(67°F)WB, Outdoor 35°C(95°F)DB

