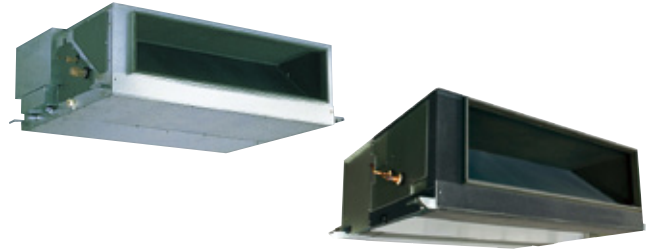


INDOOR UNIT Ceiling concealed type

PEFY-P VMH(S)-E

High Static Pressure



Increased design flexibility from sufficient external static pressure allows authentic duct air-conditioning with an elegant interior layout.



High static pressure of 200 Pa or higher

The additional external static pressure capacity provides flexibility for duct extension, branching and air outlet configuration.

PEFY-P VMH-E		P40	P50	P63	P71	P80	P100	P125	P140	P200	P250
External static pressure (Pa)	220V	50/100/200									—
	230/240V	100/150/200									—
	380V	—									110/220
	400/415V	—									130/260

PEFY-P VMHS-E	P200	P250
External static pressure (Pa)	<50> – <100> – 150 – <200> – <250>*	

*The rated external static pressure is shown without < >.
The factory setting is the rated value.

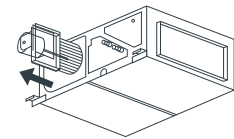
Reduced noise thanks to the use of newly designed centrifugal fan

Sound pressure level table (Standard static pressure 220V)

Sound pressure Level	Capacity		dB(A)							
	Fan Speed	High	P40	P50	P63	P71	P80	P100	P125	P140
		Low	27	27	32	32	35	34	34	34
			34	34	38	39	41	42	42	42

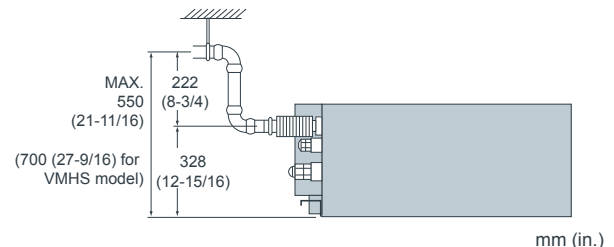
One-side maintenance

All maintenance to the unit, including fan inspection and fan motor removal, can be conducted from the inspection opening on one side. (VMH model only)



Drain pump (option) ensures up to 550mm (21-11/16in.) for VMH model / 700mm (27-9/16in.) for VMHS model of lift

The introduction of an upper drain pump allows the drain connection to be raised as high as 550mm(21-11/16in.) for VMH model/700mm (27-9/16in.) for VMHS model, allowing more freedom in piping layout design and reducing horizontal piping requirements.



► Specifications

		PEFY-P40VMH-E	PEFY-P50VMH-E	PEFY-P63VMH-E	PEFY-P71VMH-E	PEFY-P80VMH-E	PEFY-P100VMH-E	PEFY-P125VMH-E	PEFY-P140VMH-E
Power source		1-phase 220-240V 50Hz / 1-phase 220-240V 60Hz							
Cooling capacity	*1 kW	4.5	5.6	7.1	8.0	9.0	11.2	14.0	16.0
	*1 BTU/h	15,400	19,100	24,200	27,300	30,700	38,200	47,800	54,600
Cooling capacity	*10 kW	4.6	5.7	7.2	8.1	9.2	11.4	14.2	16.3
	*10 BTU/h	17,100	21,500	27,300	30,700	34,100	42,700	54,600	61,400
Heating capacity	*1 kW	5.0	6.3	8.0	9.0	10.0	12.5	16.0	18.0
	*1 BTU/h	17,100	21,500	27,300	30,700	34,100	42,700	54,600	61,400
Power consumption	Cooling kW	0.19 / 0.23		0.24 / 0.30	0.26 / 0.33	0.32 / 0.40	0.48 / 0.58		0.48 / 0.59
	Heating kW	0.19 / 0.23		0.24 / 0.30	0.26 / 0.33	0.32 / 0.40	0.48 / 0.58		0.48 / 0.59
Current	Cooling A	0.88 / 1.06		1.12 / 1.38	1.20 / 1.51	1.47 / 1.83	2.34 / 2.66		2.35 / 2.70
	Heating A	0.88 / 1.06		1.12 / 1.38	1.20 / 1.51	1.47 / 1.83	2.34 / 2.66		2.35 / 2.70
External finish		Galvanized							
Dimension H x W x D	mm	380 x 750 x 900			380 x 1,000 x 900			380 x 1,200 x 900	
	in.	15 x 29-9/16 x 35-7/16			15 x 39-3/8 x 35-7/16			15 x 47-1/4 x 35-7/16	
Net weight		41 (91)			50 (111)			65 (144)	
Heat exchanger		Cross fin (Aluminum plate fin and copper tube)						Sirocco fan x 2	
Fan	Type x Quantity		Sirocco fan x 1						
	Airflow rate (Lo-Hi)	m ³ /min	10.0-14.0		13.5-19.0	15.5-22.0	18.0-25.0	26.5-38.0	
		L/s	167-233		225-317	258-367	300-417	442-633	
		cfm	353-494		477-671	547-777	636-883	936-1342	
	External static pressure *2	220V Pa	50 · 100 · 200						
230,240V Pa		100 · 150 · 200							
Motor	Type	1-phase induction motor							0.26
	Output *3 kW	0.08		0.12	0.14	0.18			
Air filter (option)		Synthetic fiber unwoven cloth filter (long life)							
Refrigerant pipe diameter	Gas (Flare) mm(in.)	ø12.7 (ø1/2)			ø15.88 (ø5/8)				
	Liquid (Flare) mm(in.)	ø6.35 (ø1/4)			ø9.52 (ø3/8)				
Field drain pipe diameter		O.D. 32 (1-1/4)						34-42	
Sound pressure level (Lo-Hi) *6	220V dB(A)	27-34		32-38	32-39	35-41	38-44		
	230,240V dB(A)	31-37		36-41	35-41	38-43			

		PEFY-P200VMH-E	PEFY-P250VMH-E	PEFY-P200VMHS-E	PEFY-P250VMHS-E	
Power source		3-phase 380-415V 50Hz / 3N ~ 380-415V 60Hz		1-phase 220-240V 50Hz / 1-phase 220-240V 60Hz		
Cooling capacity	*1 kW	22.4	28.0	22.4	28.0	
	*1 BTU/h	76,400	95,500	76,400	95,500	
Cooling capacity	*10 kW	22.8	28.5	22.8	28.5	
	*10 BTU/h	25.0	31.5	25.0	31.5	
Power consumption	Cooling kW	0.99 / 1.14		1.23 / 1.41	0.63 *7	
	Heating kW	0.99 / 1.14		1.23 / 1.41	0.63 *7	
Current	Cooling 380-415V A	1.62 / 1.86		2.00 / 2.30	—	
	220-230-240V A	—		—	3.47-3.32-3.18 *7	
	Heating 380-415V A	1.62 / 1.86		2.00 / 2.30	—	
	220-230-240V A	—		—	3.47-3.32-3.18 *7	
External finish		Galvanized		Galvanized steel plate		
Dimension H x W x D	mm	470 x 1,250 x 1,120			470 x 1,250 x 1,120	
	in.	18-9/16 x 49-1/4 x 44-1/8			18-9/16 x 49-1/4 x 44-1/8	
Net weight		100 (221)		97 (214)	100 (221)	
Heat exchanger		Cross fin (Aluminum plate fin and copper tube)			Cross fin (Aluminum plate fin and copper tube)	
Fan	Type x Quantity		Sirocco fan x 2		Sirocco fan x 2	
	Airflow rate	m ³ /min	58.0	72.0	—	—
		L/s	967	1200	—	—
		cfm	2048	2543	—	—
	Lo-Mid-Hi	m ³ /min	—	—	50.0-61.0-72.0	58.0-71.0-84.0
		L/s	—	—	833-1017-1200	967-1183-1400
		cfm	—	—	1766-2154-2542	2048-2507-2966
	External static pressure	380V Pa	110 · 220 *4		—	
400,415V Pa		130 · 260 *4		—		
Pa		—		<50>-<100>-150-<200>-<250> *8		
	mmH ₂ O	—		<5.1>-<10.2>-15.3-<20.4>-<25.5> *8		
Motor	Type	3-phase induction motor			DC motor	
	Output kW	0.76 *5		1.08 *5	0.87	0.87
Air filter(option)		Synthetic fiber unwoven cloth filter (long life)			Synthetic fiber unwoven cloth filter (long life filter) and filter box are recommended.	
Refrigerant pipe diameter	Gas (Brazing) mm(in.)	ø19.05 (ø3/4)		ø22.2 (ø7/8)		
	Liquid (Brazing) mm(in.)	ø9.52 (ø3/8)			ø9.52 (ø3/8)	
Field drain pipe diameter		O.D. 32 (1-1/4)				
Sound pressure level	380V dB(A)	42 (110Pa) / 45 (220Pa) *6		50 (110Pa) / 52 (220Pa) *6		
	400,415V dB(A)	44 (130Pa) / 47 (260Pa) *6		52 (130Pa) / 54 (260Pa) *6		
	Lo-Mid-Hi dB(A)	—		—		
				36-39-43 *9	39-42-46 *9	

Notes:

- *1 Cooling/heating capacity indicates the maximum value at operation under the following condition.
Cooling Indoor : 27°C(81°F)DB/19°C(66°F)WB, Outdoor : 35°C(95°F)DB
Heating Indoor : 20°C(68°F)DB, Outdoor : 7°C(45°F)DB/6°C(43°F)WB
*2 The external static pressure is set to 100Pa (at 220V) / 150Pa (at 230, 240V) at factory shipment.
*3 The value are that at 240V.
*4 The external static pressure is set to 220Pa (at 380V) / 260Pa (at 400, 415V) at factory shipment.
*5 The value are that at 415V.

- *6 It is measured in anechoic room.
*7 The values are measured at the rated external static pressure.
*8 The rated external static pressure is shown without < > .
The factory setting is the rated value.
*9 It is measured at the rated external static pressure in anechoic room.
*10 Reference data under condition of Indoor 27°C(81°F)DB/19.5°C(67°F)WB, Outdoor 35°C(95°F)DB

