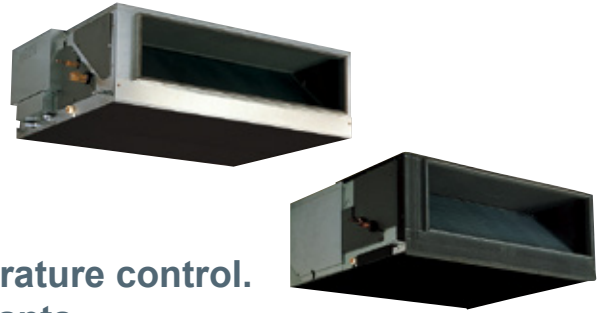


INDOOR UNIT Fresh Air Intake Type

PEFY-P VMH-E-F

Fresh Air Intake

Fresh Air can be taken in with temperature control. Ideal for Offices, Stores and Restaurants.



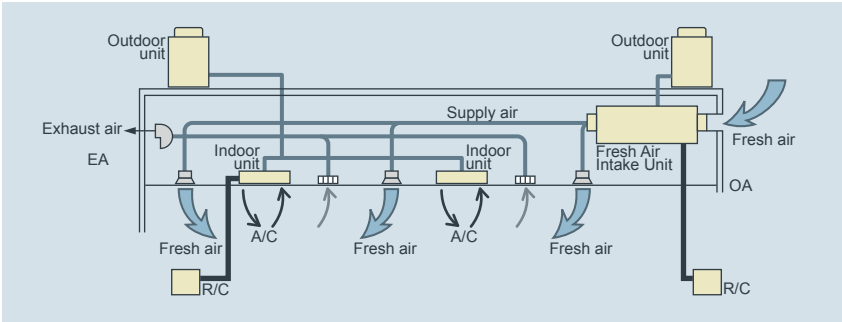
The Fresh Air intake indoor unit can be installed in any place.

Fresh Air can be taken in with temperature control. Outside air will be cooled down or heated up to supply it to the room, and this reduces the air conditioning load in a room. High-capacity humidifier will keep room air moist and comfortable during heating. *Supply air temperature control cannot be used.

Office, Lobby, Workshop, Restroom, Nursing home, Smoking corner, Kitchen in restaurant

*** Limits of capacity connectable to outdoor unit**
Max. 110% of outdoor unit capacity, excepting heating at outdoor temperature of less than -5°C(23°F) (100%).

Example



< Note >

Fan remains in operation during Thermo-OFF. Using this model with other type of indoor unit is recommended to prevent cold draft which is caused due to intaken fresh air.

► Specifications

		PEFY-P80VMH-E-F		PEFY-P140VMH-E-F		
Power source		1-phase 220-240V 50Hz / 1-phase 208-230V 60Hz				
Cooling capacity	*1 kW	9.0		16.0		
	*1 BTU/h	30,700		54,600		
Heating capacity	*1 kW	8.5		15.1		
	*1 BTU/h	29,000		51,500		
Power consumption	Cooling kW	0.16 / 0.21		0.29 / 0.33		
	Heating kW	0.16 / 0.21		0.29 / 0.33		
Current	Cooling A	0.67 / 0.91		1.24 / 1.48		
	Heating A	0.67 / 0.91		1.24 / 1.48		
External finish		Galvanized				
Dimension H x W x D		mm(in.) 380 x 1000 x 900 (15 x 39-3/8 x 35-7/16)		380 x 1200 x 900 (15 x 47-1/4 x 35-7/16)		
Net weight		kg(lbs.) 50 (111)		67 (148)		
Heat exchanger		Cross fin (Aluminum plate fin and copper tube)				
Fan	Type x Quantity		Sirocco fan x 1		Sirocco fan x 2	
	Airflow rate	m ³ /min	9.0		18.0	
		L/s	150		300	
		cfm	318		636	
	External static pressure (Lo-Mid-Hi)	208V Pa	35 - 85 - 170		35 - 85 - 170	
		220V Pa	40 - 115 - 190		50 - 115 - 190	
		230V Pa	50 - 130 - 210		60 - 130 - 220	
240V Pa		80 - 170 - 220		100 - 170 - 240		
Motor Type		1-phase induction motor				
Output kW		0.09 (at 220V)		0.14 (at 220V)		
Air filter (option)		Synthetic fiber unwoven cloth filter (long life)				
Refrigerant pipe diameter	Gas (Flare) mm(in.)	ø15.88 (ø5/8)				
	Liquid (Flare) mm(in.)	ø9.52 (ø3/8)				
Field drain pipe diameter		mm(in.) O.D.32 (1-1/4)				
Sound pressure level (Lo-Mid-Hi) *2	208, 220V dB(A)	27 - 38 - 43		28 - 38 - 43		
	230, 240V dB(A)	33 - 43 - 45		34 - 43 - 45		

		PEFY-P200VMH-E-F		PEFY-P250 VMH-E-F		
Power source		3-phase 380-415V 50Hz / 3N~ 380-415V 60Hz				
Cooling capacity	kW	22.4		28.0		
	BTU/h	76,400		95,500		
Heating capacity	kW	21.2		26.5		
	BTU/h	72,300		90,400		
Power consumption	Cooling kW	0.34 / 0.42		0.39 / 0.50		
	Heating kW	0.34 / 0.42		0.39 / 0.50		
Current	Cooling A	0.58 / 0.74		0.68 / 0.86		
	Heating A	0.58 / 0.74		0.68 / 0.86		
External finish		Galvanized				
Dimension H x W x D		mm(in.) 470 x 1250 x 1120 (18-9/16 x 49-1/4 x 44-1/8)				
Net weight		kg(lbs.) 100 (221)				
Heat exchanger		Cross fin (Aluminum plate fin and copper tube)				
Fan	Type x Quantity		Sirocco fan x 2			
	Airflow rate	m ³ /min	28		35	
		L/s	467		583	
		cfm	989		1236	
	External static pressure	380V Pa	140 / 200		110 / 190	
		400V Pa	150 / 210		120 / 200	
		415V Pa	160 / 220		130 / 210	
Motor Type		3-phase induction motor				
Output kW		0.20		0.23		
Air filter (option)		Synthetic fiber unwoven cloth filter (long life type)				
Refrigerant pipe diameter	Gas (Flare) mm(in.)	ø19.05 (ø3/4)		ø22.2 (ø7/8)		
	Liquid (Flare) mm(in.)	ø9.52 (ø3/8)				
Field drain pipe diameter		mm(in.) O.D.32 (1-1/4)				
Sound pressure level *2	380V dB(A)	39 / 42		40 / 44		
	400V dB(A)	40 / 43		40 / 45		
	415V dB(A)	40 / 44		41 / 46		

Notes:

- The cooling and heating capacities are the maximum capacities that were obtained by operating in the above air conditions and with a refrigerant pipe of about 7.5m.
- The actual capacity characteristics vary with the combination of indoor and outdoor units. See the technical information.
- The operating noise is the data that was obtained by measuring it 1.5m from the bottom of the unit in an anechoic room. (Noise meter A-scale value)
- The figure of Electrical characteristic indicates at 240V 50Hz/230V60Hz (PEFY-P80, 140VMH-E-F type), at 220Pa setting at 415V (PEFY-P200, 250VMH-E-F type).
- When the 100% fresh air indoor units are connected, the maximum connectable indoor units to 1 outdoor unit are as follows

Heat pump models	Cooling only
110%(100% in case of heating below-5°C(23°F))	110%

- Operational temp range is (Cooling : from 21°C(70°F)DB/15.5°C(60°F)WB to 43°C(109°F)DB/35°C(95°F)WB)
(Heating : from -10°C(14°F)DB to 20°C(68°F)DB)

- * Thermo off(Fan) operation automatically starts either when temperature is lower than 21°C(70°F)DB in cooling mode or when the temperature exceeds 20°C(68°F)DB in heating mode.
- As the room temp in sensed by the thermo in the remote controller or the one in the room, be sure to use either remote controller or room thermo.
 - Autochangeover function or Dry mode is NOT available. Fan mode operation during the thermo off in Cooling/Heating mode.
 - In any case, the air flow rate should be kept lower than 110% of the above chart. Please see "Fan curves" for the details.
 - When this unit is used as sole A/C system, be careful about the dew in air outlet grilles in cooling mode.
 - Un-conditioned outdoor air such as humid air or cold air blows to the indoor during thermo off operation.
Please be careful when positioning indoor unit air outlet grilles, ie take the necessary precautions for cold air, and also insulate rooms for dew condensation prevention as required.
 - Air filter must be installed in the air intake side. The filter should be attached where easy maintenance is possible in case of usage of filed supply filters.
 - Long life cannot be used with Hi-efficiency filter together (PEFY-P80 · 140VMH-E-F type).