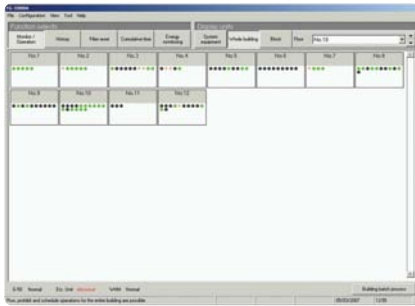


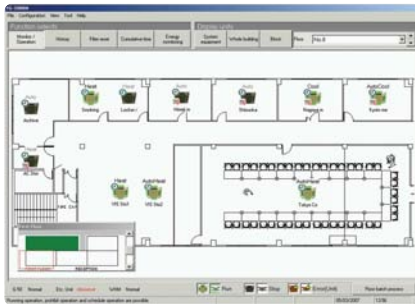
TG2000 Screenshots

Display Whole



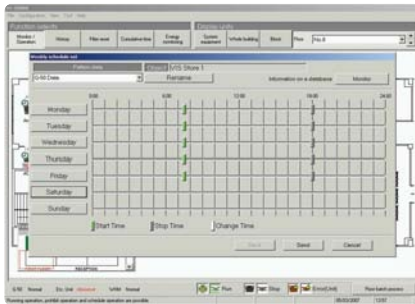
The 2000 indoor units status may be shown on one screen.

Display Floor



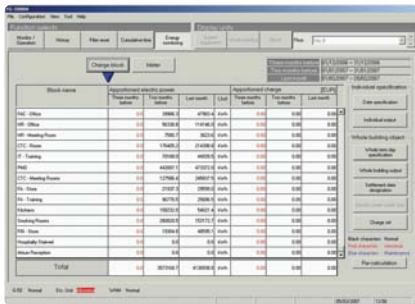
AutoCAD drawing may be imported to TG2000 to display floor screens.

Daily, Weekly and Annual Scheduling (AS PIN code)



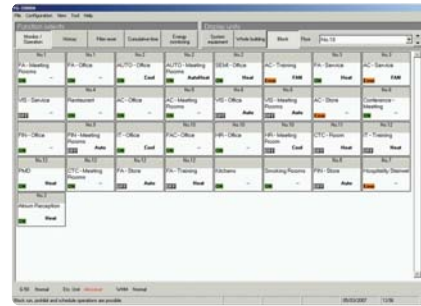
Scheduling may be set from the TG2000. A night set back operation is available (HEAT, 12°C). Optional on the G50, standard with the GB50.

Energy Monitoring (EC PIN code)



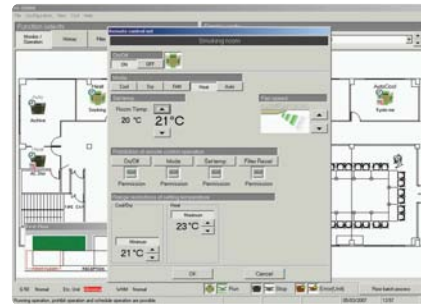
TG2000 in conjunction with energy meters can monitor the energy consumption for each outdoor unit, indoor unit or area. The indoor unit run hours can also be displayed.

Display Block



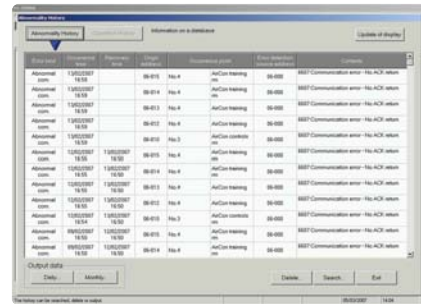
Block may be set for each area. Settings may be changed by one click of the mouse for each area.

Remote Controller Settings



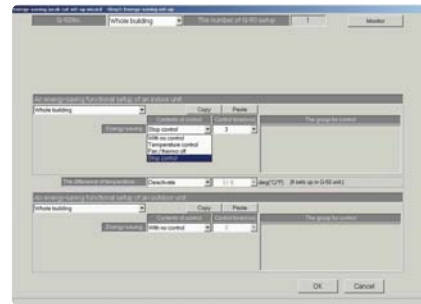
Click on any icons in the floor view to access the remote controller settings. Buttons on the local controllers may be locked (On/Off, Mode, Setpoint, Filter reset).

Monitor Fault Codes



Faults with the unit address can be displayed under fault conditions.

Energy Saving (ES PIN code)



TG2000 offers different energy saving options including load shedding.

New icons now available to suit model type installed

