

M2M-Machine 2 Machine Web Screenshots

MEUK Website



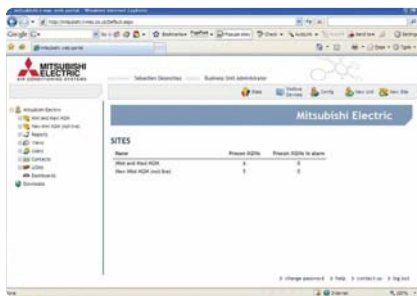
M2M is accessible using MEUK website.

Login



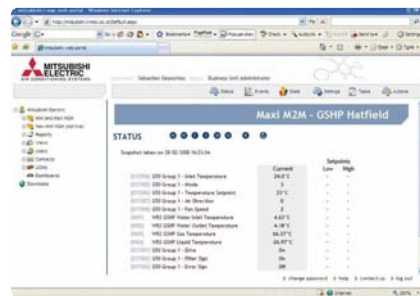
A username and password is required to monitor and control sites.

Monitor Active Alarms and Sites



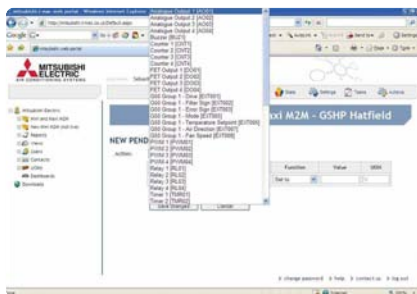
All sites are listed with active alarm sites.

Status



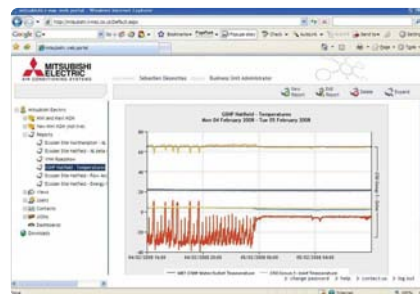
A site can be selected to monitor each system.

Set Parameters



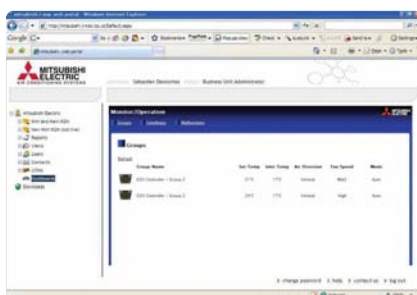
Indoor unit and third party equipment can be controlled from the Website.

Reports



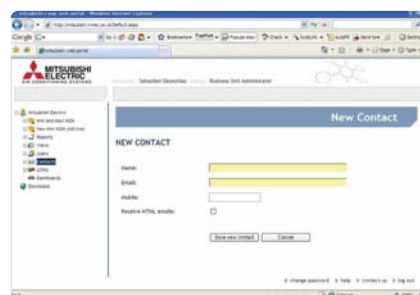
Reports can be generated for analysis.

Dashboard



G50/AG150/GB50 web pages are available for the air conditioning units

Administration



Using the administration level, the phone numbers and email of each duty engineer may be set and activated.